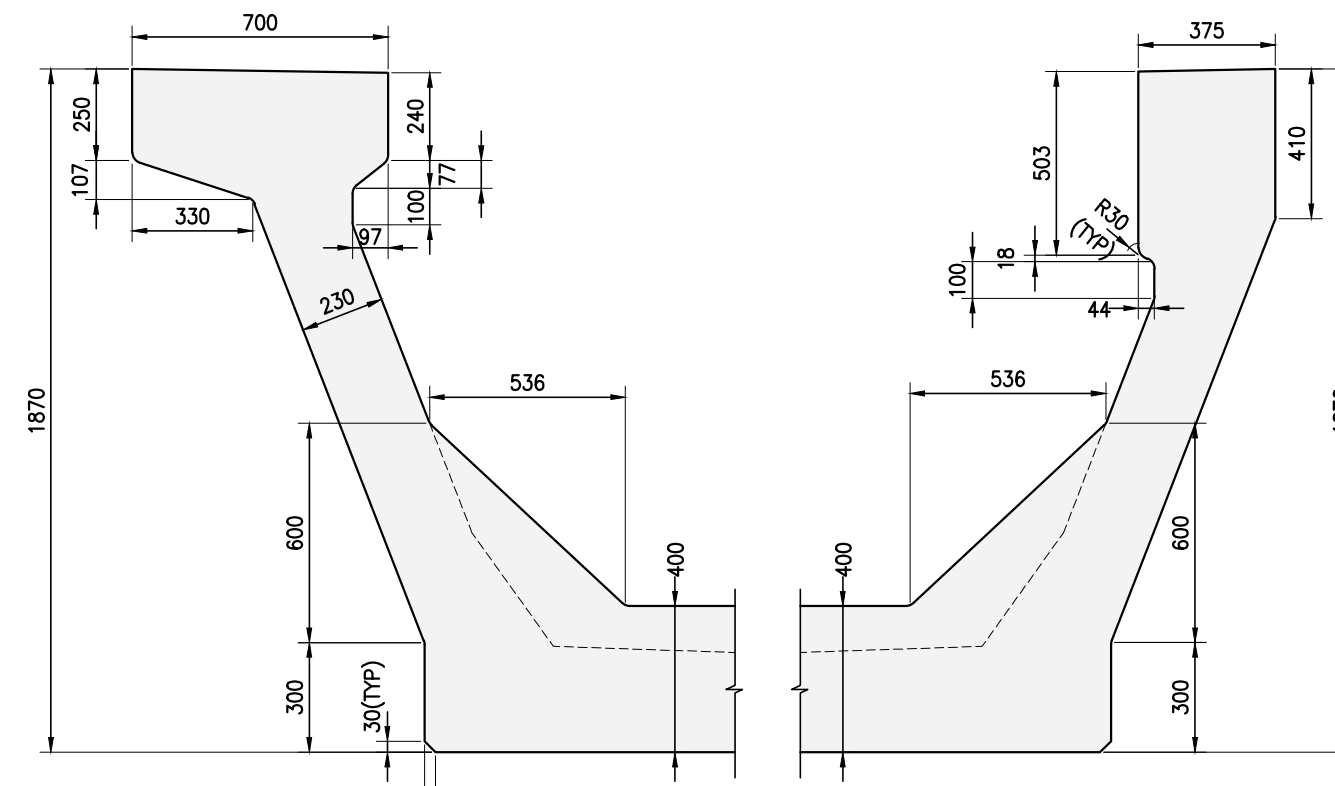


SECTION B-B  
(SCALE :1:30)



WEB DETAIL AT END SECTION  
(SCALE :1:20)

THIS DRAWING IS APPLICABLE FOR FOLLOWING SPANS

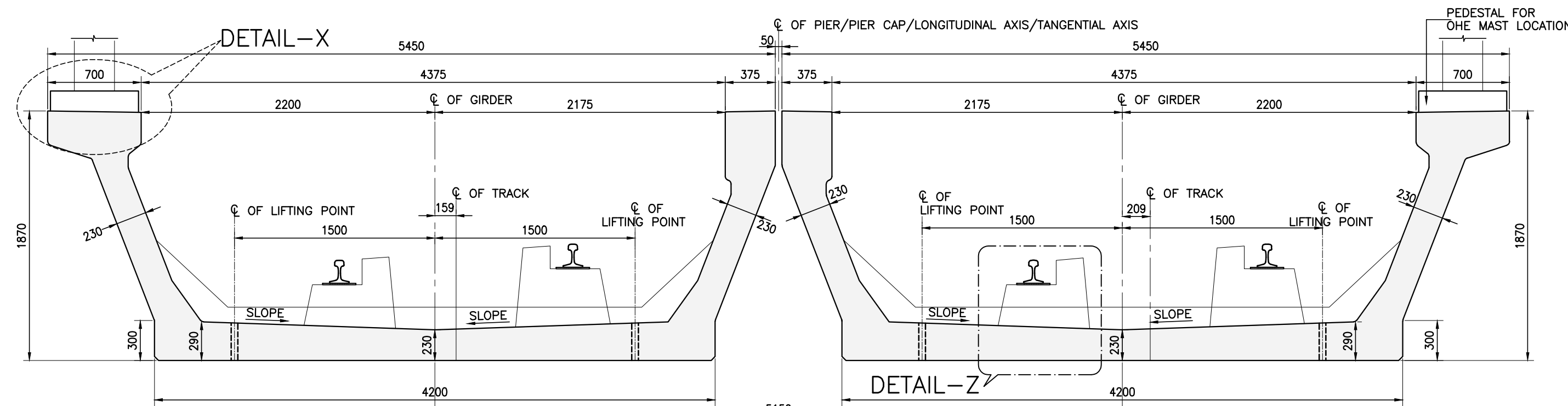
P20 TO P21	P133 TO P134	P156 TO P157
P118 TO P119	P134 TO P135	P158 TO P159
P119 TO P120	P135 TO P136	P159 TO P160
P120 TO P121	P137 TO P138	P160 TO P161
P121 TO P122	P138 TO P139	P161 TO P162
P122 TO P123	P139 TO P140	P162 TO P163
P123 TO P124	P140 TO P141	P163 TO P164
P124 TO P125	P141 TO P142	P164 TO P165
P125 TO P126	P142 TO P143	P165 TO P166
P126 TO P127	P144 TO P145	P192 TO P193
P128 TO P129	P145 TO P146	P193 TO P194
P129 TO P130	P146 TO P147	P194 TO P195
	P147 TO P148	P195 TO P196
	P148 TO P149	P196 TO P197
	P149 TO P150	P197 TO P198
	P150 TO P151	P198 TO P199
	P151 TO P152	P199 TO P200
	P152 TO P153	
	P153 TO P154	

SPAN APPLICABILITY IS SUBJECTED TO CHANGE AND WILL BE DECIDED UPON FINALISATION/APPROVAL OF GAD

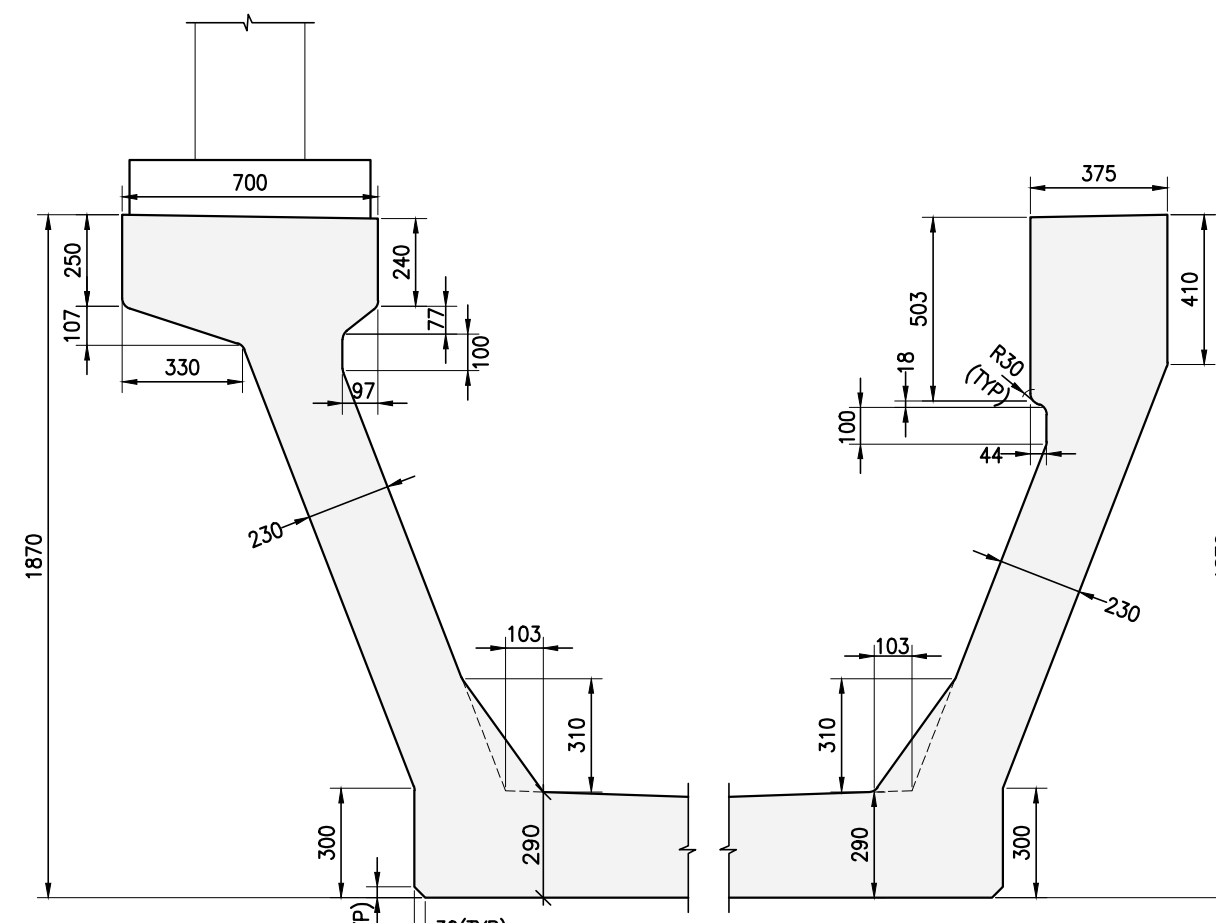
HOLES FOR CABLE TRAY BOLTS ARE NOT SHOWN DUE TO NON AVAILABILITY OF DETAILS.

FOR OHE MAST DETAILS REFER DWG. NO. 022077-BSRP-CR2-C-VD-GEN-20-5006

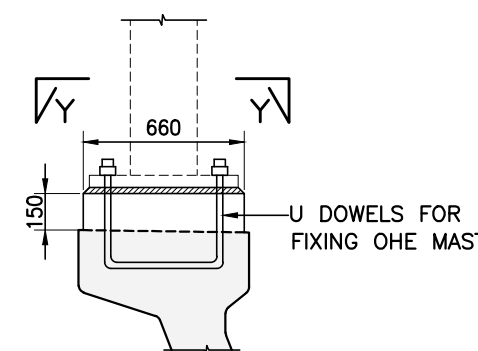
MINIMUM THICKNESS OF PLINTH IS CONSIDERED AS 329MM FOR MID SECTION & 188MM FOR SUPPORT SECTION



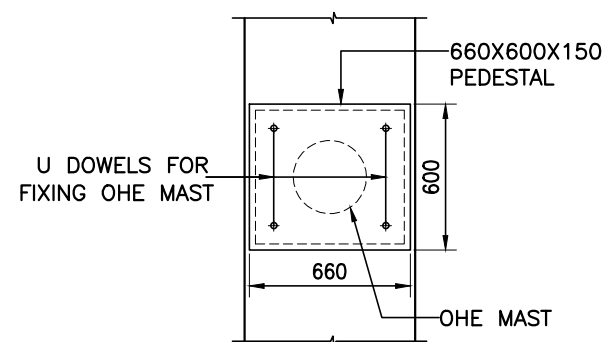
SECTION C-C  
(SCALE :1:30)



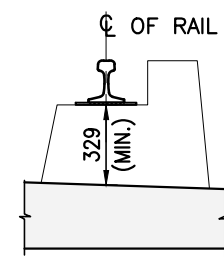
WEB DETAIL AT MID SECTION  
(SCALE :1:20)



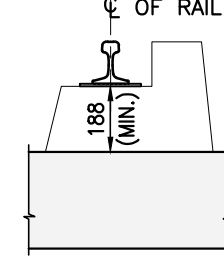
DETAIL-X  
(SCALE :1:30)



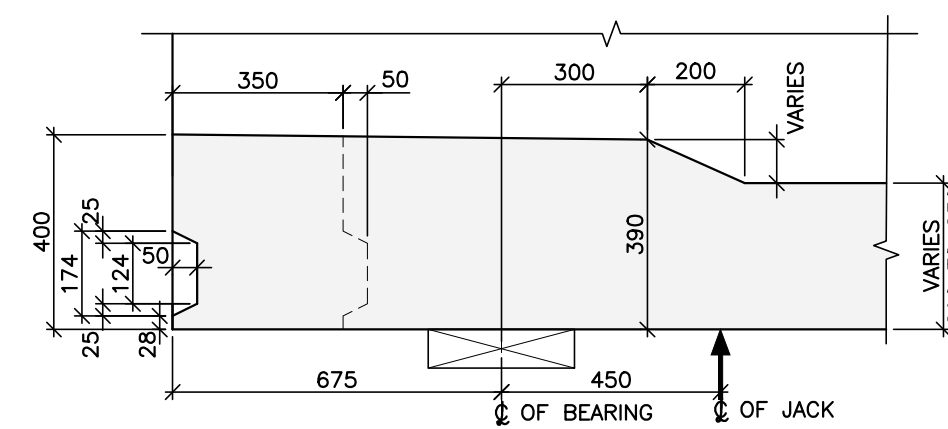
SECTION Y-Y  
(SCALE :1:30)



DETAIL-Z  
(SCALE :1:30)



DETAIL-Z1  
(SCALE :1:30)



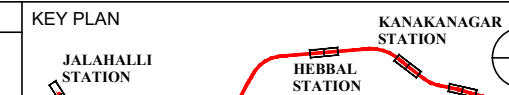
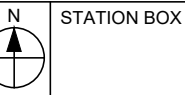
SECTION D-D  
(SCALE :1:15)

#### REFERENCE DRAWINGS: (LATEST REVISION)

- 022077-BSRP-CR2-C-VD-GEN-30-1031 - GENERAL ARRANGEMENT AND DIMENSIONAL DETAIL OF 22M CURVED SPAN SUPERSTRUCTURE (R<sub>2</sub>328M & R<438M)
- 022077-BSRP-CR2-C-VD-GEN-30-1033 - PRE TENSIONED STRAND DETAILS FOR 22M CURVED SPAN SUPERSTRUCTURE (R<sub>2</sub>328M & R<438M)
- 022077-BSRP-CR2-C-VD-GEN-30-1034 - REINFORCEMENT DETAILS OF 22M CURVED SPAN SUPERSTRUCTURE (R<sub>2</sub>328M & R<438M) SHEET 1 OF 2
- 022077-BSRP-CR2-C-VD-GEN-30-1034 - REINFORCEMENT DETAILS OF 22M CURVED SPAN SUPERSTRUCTURE (R<sub>2</sub>328M & R<438M) SHEET 2 OF 2
- 022077-BSRP-CR2-C-VD-GEN-30-1035 - REINFORCEMENT DETAILS OF 22M CURVED SPAN SUPERSTRUCTURE (R<sub>2</sub>328M & R<438M) SHEET 1 OF 2
- 022077-BSRP-CR2-C-VD-GEN-30-1035 - REINFORCEMENT DETAILS OF 22M CURVED SPAN SUPERSTRUCTURE (R<sub>2</sub>328M & R<438M) SHEET 2 OF 2
- 022077-BSRP-CR2-C-VD-GEN-30-1036 - GAUGES AND CLEARANCES - 22 M SPAN - (R<sub>2</sub>328M & R<438M) - PLAN VIEW & SECTION VIEW
- 022077-BSRP-CR2-C-VD-GEN-30-5001 - PRE TENSIONED STRAND DETAILS FOR U-GIRDER
- 022077-BSRP-CR2-C-VD-GEN-30-5006 - TYPICAL DETAIL OF ANCHOR & REINFORCEMENT OF PEDESTAL & WEB OF U-GIRDER AT OHE MAST LOCATION
- 022077-BSRP-CR2-C-VD-GEN-30-5021 - PLACING OF U-GIRDER AND I-GIRDER FOR CR2 & CR4
- 022077-BSRP-CR2-C-VD-GEN-30-5008 - TYPICAL REINFORCEMENT DETAILS AT LIFTING HOLE LOCATION FOR U GIRDER

#### LICENSE:

"THIS DESIGN FOR THE PROJECT HAVE BEEN PREPARED UNDER LICENSE FROM M/S SYSTRA"

NOTES :			LEGEND :		REFERENCE DRAWINGS :		REFERENCE DOCUMENTS :		KEY PLAN			STATION BOX KEY PLAN		
1. ALL DIMENSIONS ARE IN MILLIMETRES. UNLESS OTHERWISE MENTIONED. 2. DIMENSIONS ARE NOT TO BE SCALED, FOLLOW ONLY WRITTEN DIMENSIONS. 3. SUITABLE PROVISION TO BE MADE FOR ANCHORING OHE MAST.			☒ — BEARING  ↑ — JACKING POSITION IN ELEVATION											
REVISIONS			CONTRACTOR		QUALITY ASSURANCE				EMPLOYER :				PROJECT :	
			TRANSPORTATION INFRASTRUCTURE IC EDRC-SPECIAL BRIDGES		The responsibility of control, check and verification of accuracy, correctness, completeness, integration and full compliance of Contract provisions in respect of design analysis and drawing rests with Design & Build Contractor.				RAIL INFRASTRUCTURE DEVELOPMENT COMPANY (KARNATAKA) LIMITED				BENGALURU SUBURBAN RAILWAY PROJECT (BSRP) K-RIDE CORRIDOR - 2	
			DETAILED DESIGN CONSULTANT (DDC) :		GENERAL CONSULTANTS				COUNTER SIGN				DRAWING TITLE :	
			PROOF CONSULTANT (PC) :		NAME SIGN				PROJECT DIRECTOR				GENERAL ARRANGEMENT AND DIMENSIONAL DETAIL OF 22M CURVED SPAN SUPERSTRUCTURE (R=328M & R<438M)	
					K RIDE				DESIGNATION SIGN DATE					
0 21.05.2024 GOOD FOR CONSTRUCTION			STUP Consultants Pvt. Ltd.		CIVIL/GAD				SIGN					
D 30.01.2024 REVISION BY ADDING PATENT NOTE & DUE TO CONSENTION OF			EDRC-SPECIAL BRIDGES		CIVIL/ALIGNMENT				NAME					
C 01.12.2023 REVISED AS PER GCN COMMENTS THROUGH LETTER NO. 1077			REVISED AS MARKED		CIVIL/STRUCTURAL				DATE					
B 11.10.2023			REVISED AS MARKED		CIVIL/GEOTECH				CIVIL/STRUCTURAL					
A 14.07.2023 FOR APPROVAL			REVISED AS MARKED		PREPARED BY				GM/CIVIL/DESIGN					
REV DATE BRIEF DESCRIPTION			L&T CONSTRUCTION EDRC-SPECIAL BRIDGES - TIC		CHECKED BY				ISSUED BY					
			Indian Institute of Technology Madras IIT P.O., Chennai 600 036 INDIA		APPROVED BY									
					ISSUED BY									